

Water Sensor

INSTRUCTION



KP-WS-01

1. General information

The KP-WS-01 water sensor is a battery-powered Z-Wave device that will send information and sound an alarm when it detects water. The set consists of a water sensor and an additionally mounted external, miniature sensor. The sensor will detect water if it touches the metal feet on the bottom of the flood sensor or metal points on the external sensor. The device will start making a sound and will send a message about this event to our gateway. The miniature sensor does not need to be connected to the flood sensor. It is used to detect leaks in hard-to-reach places where we could not insert a flood sensor. When the sensor detects water, it will send a message to the Z-Wave gateway and display the status in the application. The device is battery-powered, small and can be easily installed anywhere.

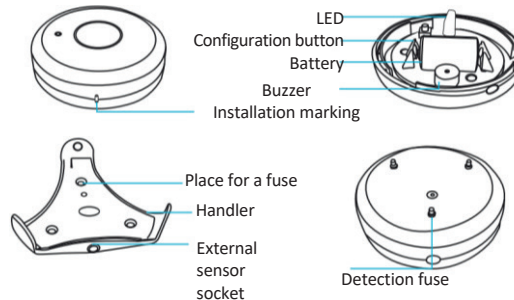
2. Package content

- Flood sensor.
- Flood sensor holder.
- Battery.
- Miniature external sensor (connected to the big sensor).
- User manual.
- Mounting accessories.

3. Additional information

- It makes a sound and sends a message to our Z-Wave gateway when it detects water.
- Easy assembly.
- An additional external sensor allows placement in hard-to-reach places.
- Compatible with any Z-Wave gateway.
- Best placed under the washing machine, dryer, dishwasher, bathtub, shower, washbasin, kitchen sink.

4. Description of the device

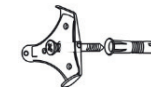


5. Technical specifications

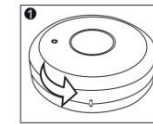
Power supply	Battery CR 23A
Wireless protocol	Z-Wave
Frequency	868.4MHz
Network range	up to 50 m outdoors, up to 30 m indoors
Storage temperature	0° C to 60° C
Operating temperature	0° C to 40° C
Battery life	2 years
Dimensions (mm)	68*68*34

6. Installation instruction

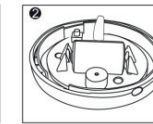
1. Install the holder using the accessories included in the set.



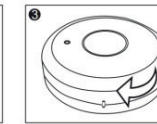
2. Install battery.



Open upper part of the sensor.

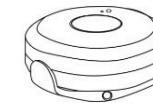


Insert battery.



Close upper part of the sensor.

3. Attach the flood sensor to the holder.



Caution:

1. When closing the sensor, pay attention to the correct positioning of the mounting marking.
2. When attaching the flood sensor to the mount, make sure the detection feet are in the correct location.
3. Installing the handle and external sensor is not necessary for the proper operation of the device.